

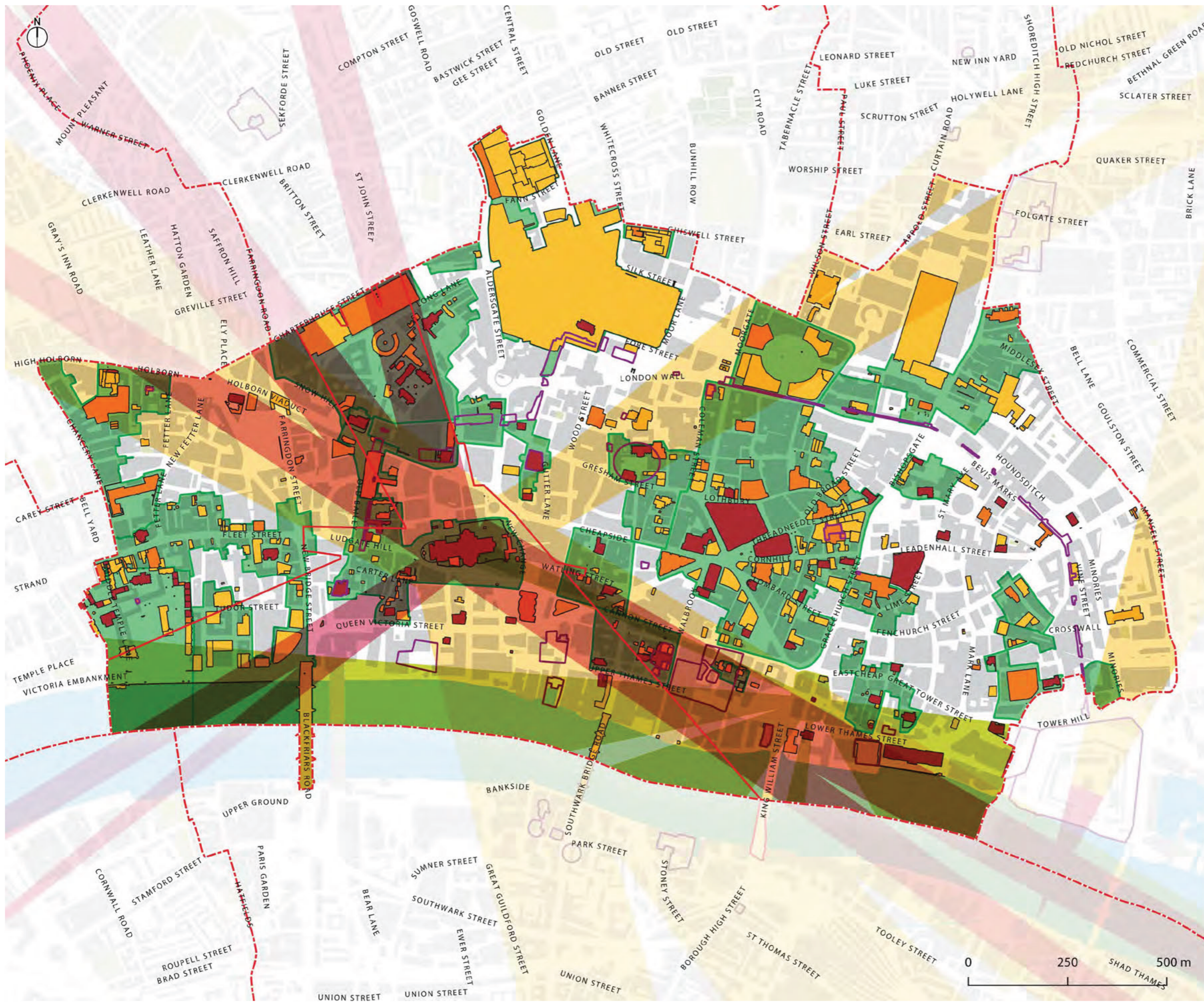
- Borough boundaries
(Source: Ordnance Survey Boundary Line 2020)
 - Scheduled monuments
(Source: Historic England)
 - Conservation areas
(Source: City of London)
- Listed buildings
(Source: City of London)
- Grade I listed
 - Grade II* listed
 - Grade II listed

CITY OF LONDON STATEMENT OF HERITAGE SIGNIFICANCE
HISTORIC ENGLAND STUDY

DESIGNATIONS:
 LISTED BUILDINGS,
 SCHEDULED MONUMENTS AND
 CONSERVATION AREAS

1733/260 Map 8

MARCH 2021 Alan Baxter

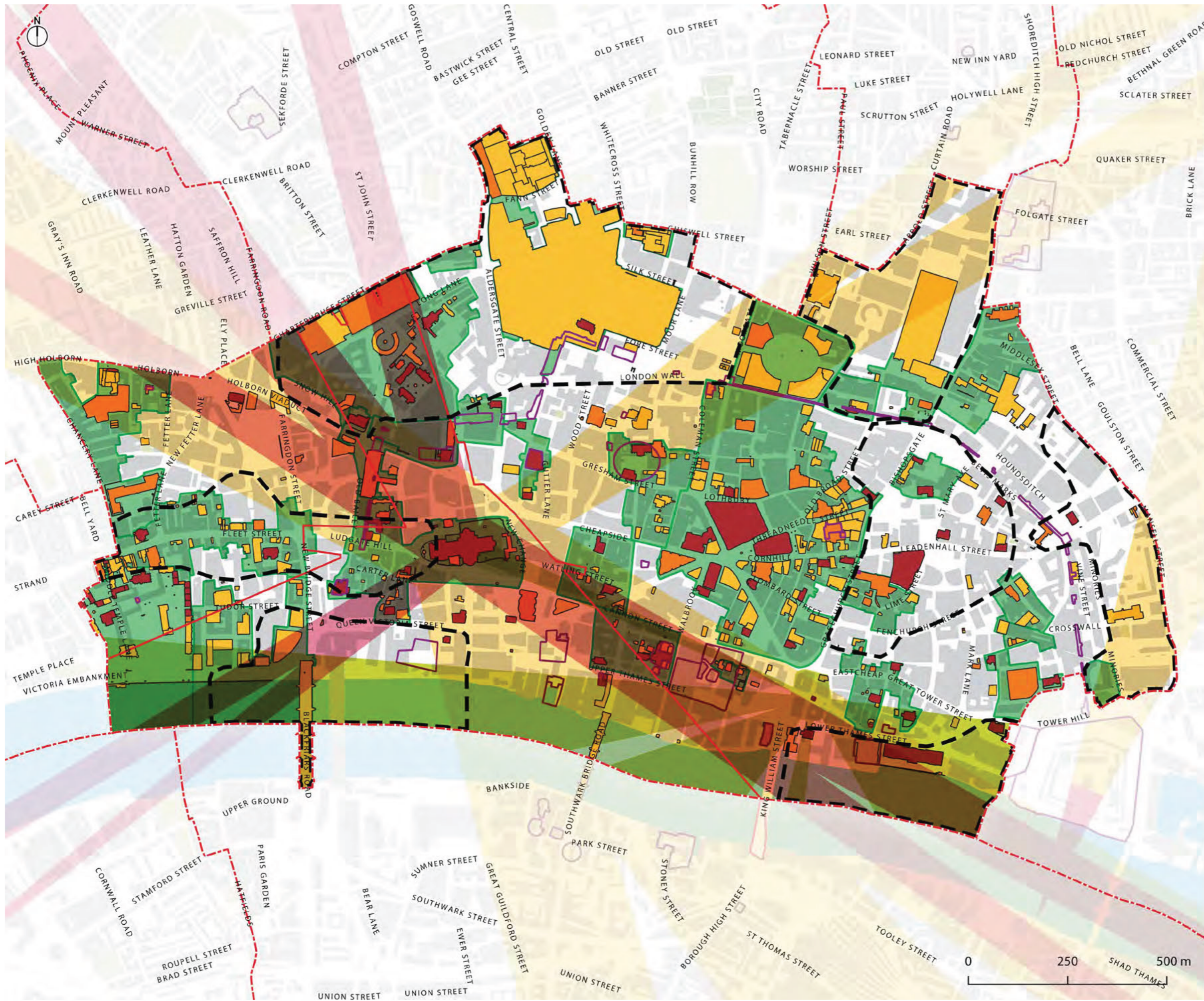


- Borough boundaries
(Source: Ordnance Survey Boundary Line 2020)
- St Pauls Heights Policy Area
(Source: City of London)
- LVMF Landmark Viewing Corridors (Source: GLA)
- LVMF Background Wider Setting Consultation Area (Source: City of London)
- Monument Views and Setting (Source: City of London)
- Scheduled monuments (Source: Historic England)
- Conservation areas (Source: City of London)
- Listed buildings (Source: City of London)
 - Grade I listed
 - Grade II* listed
 - Grade II listed

CITY OF LONDON STATEMENT OF HERITAGE SIGNIFICANCE
 HISTORIC ENGLAND STUDY

DESIGNATIONS + VIEWS:
 HERITAGE DESIGNATIONS, LVMF VIEWS, MONUMENT VIEWS AND ST PAULS HEIGHTS

1733/260 Map 9
 MARCH 2021 Alan Baxter



- Borough boundaries
(Source: Ordnance Survey Boundary Line 2020)
- Key areas of change
(Source: draft City Plan 2036: Shaping the Future City. Digitised by Alan Baxter)
- St Pauls Heights Policy Area
(Source: City of London)
- LVMF Landmark Viewing Corridors (Source: GLA)
- LVMF Background Wider Setting Consultation Area
(Source: City of London)
- Monument Views and Setting
(Source: City of London)
- Scheduled monuments
(Source: Historic England)
- Conservation areas
(Source: City of London)
- Listed buildings
(Source: City of London)
- Grade I listed
- Grade II* listed
- Grade II listed

CITY OF LONDON STATEMENT OF HERITAGE SIGNIFICANCE HISTORIC ENGLAND STUDY	
DESIGNATIONS, PROTECTED VIEWS + KEY AREAS OF CHANGE	
1733/260 Map 10	
MARCH 2021	Alan Baxter