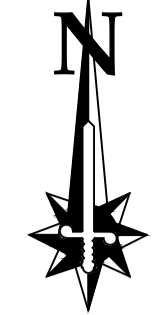


NOTES

1. DRAWING BASED ON TOPOGRAPHICAL SURVEY RECEIVED FROM TOPOCREW DRAWING NO. FCW-TOP-220-2D
2. NO INFORMATION TO BE SCALED FROM THIS DRAWING
3. ALL DIMENSIONS TO BE CHECKED BY SETTING OUT MEASUREMENT PRIOR TO COMMENCEMENT OF WORKS
4. CONTRACTOR TO VERIFY STATION CO-ORDINATES BEFORE SETTING OUT ON SITE. ANY DISCREPANCIES TO BE REPORTED TO THE ENGINEER
5. ALL DIMENSIONS ARE IN METRES UNLESS SPECIFIED OTHERWISE
6. WORKS SHALL COMPLY WITH THE CURRENT CITY OF LONDON SPECIFICATION FOR HIGHWAY WORKS
7. ALL HARD MATERIAL BROKEN OUT UNDER THE CONTRACT IS TO BE DISPOSED OF TO CONTRACTOR'S TIP UNLESS OTHERWISE SPECIFIED
8. THIS DRAWING TO BE READ IN CONJUNCTION WITH OTHERS IN THE CONSTRUCTION PACK
9. ALL SIGNS AND ROAD MARKINGS TO BE IN ACCORDANCE WITH THE TRAFFIC SIGNS REGULATIONS AND GENERAL DIRECTIONS 2016
10. ACCESS TO BUSINESSES TO BE MAINTAINED AT ALL TIMES
11. UNDERGROUND SERVICES AND STRUCTURES ARE PRESENT - NO MECHANICAL PLANT TO BE USED UNTIL RADAR INFORMATION, AND CAT SCANS HAVE BEEN CONSULTED AND SERVICES MARKED ON THE SITE SURFACE
12. DUE TO LUL TUNNEL MAX 1.5TON MACHINE TO BE USED FOR BREAKING HARD SURFACE MATERIALS AND HAND TOOLS ONLY BELOW
13. ALL TRAFFIC MANAGEMENT TO BE UNDERTAKEN IN ACCORDANCE WITH THE TRAFFIC SIGNS MANUAL CHAPTER 8
14. THE CONTRACTOR WILL BE HELD RESPONSIBLE FOR ANY DAMAGE CAUSED TO PRIVATE ASSETS



Key

- New section of footway paved in 300 x 200 yorkstone setts
- Footway paved in 600 x random length yorkstone pavers
- Yorkstone 400 x 400 x 63 modular blister tactile paving
- New granite kerb
- New raised planter with Cor Ten edge
- New small tree/multi-stem in planter
- New stainless steel cycle stands
- New 300 wide yorkstone surface drainage channel
- 300 x 300 stainless steel footway gully grate
- Pit to store hoses for planter irrigation
- Standpipe within planter
- New benches (specific design and locations TBC)
- Proposed new Legible London wayfinding sign
- Existing heritage telephone box
- Install new RS115 NAL socket. To be 600mm ducks foot, or where insufficient cover to be shallow bridge deck type. Refer to NAL standard installation instructions for foundation details
- Construct new 600mm x 600mm signal draw pit to TFL signal specification. See Design detail
- New 100mm diameter orange duct with number required indicated when more than one

Rev No.	Date	Description	By
Revision			

PROJECT:
FINSBURY CIRCUS WESTERN ARM

TITLE:
GENERAL ARRANGEMENT

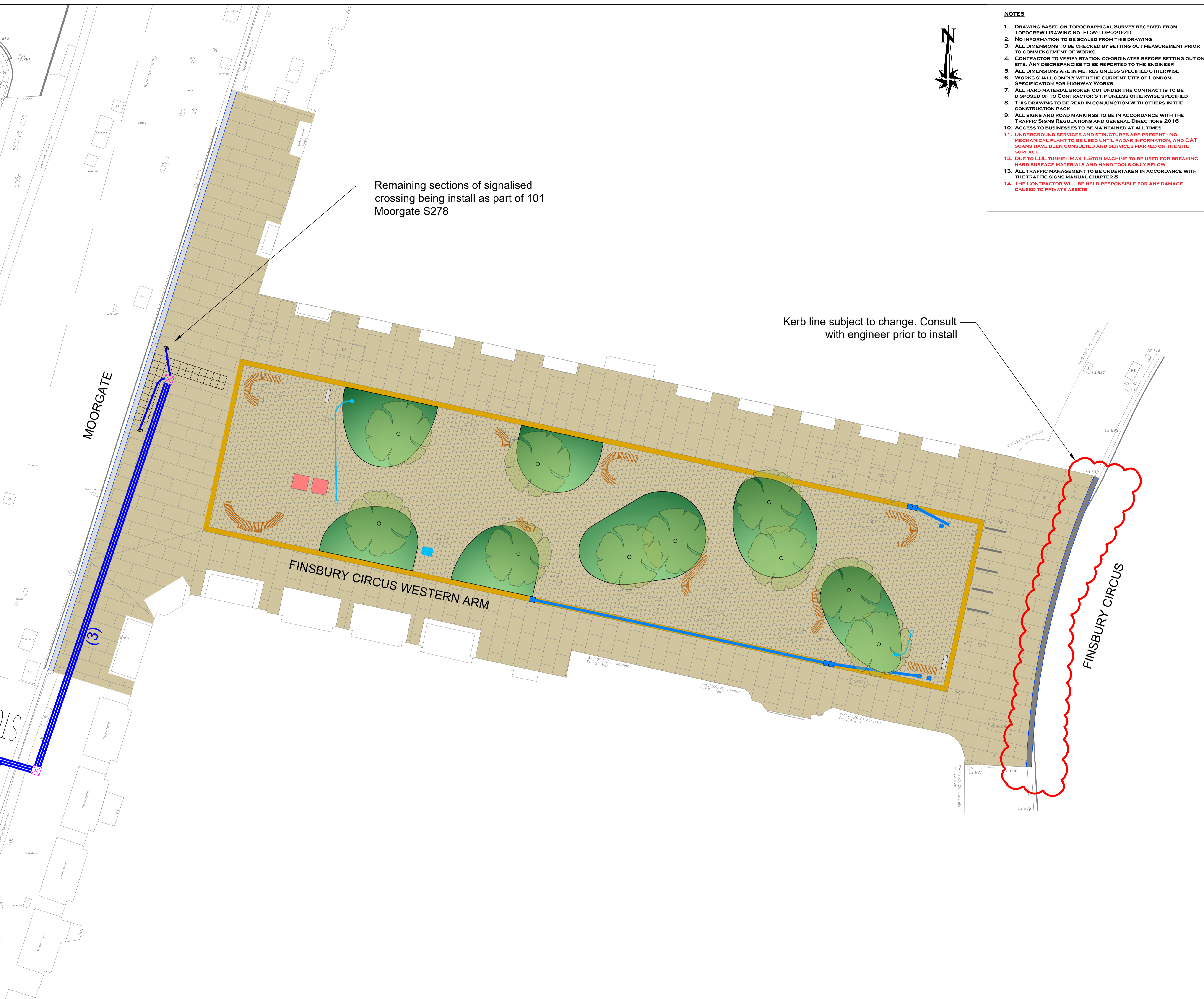
CLIENT:
HIGHWAY DESIGN AND CONSTRUCTION

DEPARTMENT OF THE BUILT ENVIRONMENT
PO Box 270
GUILDHALL
LONDON
EC2P 2EJ
TEL: 020 7606 3030

CITY OF LONDON

Sheet: SHEET 1 of 1	THIS MAP IS REPRODUCED FROM ORDNANCE SURVEY MATERIAL WITH THE PERMISSION OF ORDNANCE SURVEY ON BEHALF OF THE CONTROLLER OF HER MAJESTY'S STATIONERY OFFICE © CROWN COPYRIGHT 2016. ALL RIGHTS RESERVED. UNAUTHORISED REPRODUCTION INFRINGES CROWN COPYRIGHT AND MAY LEAD TO PROSECUTION OR CIVIL PROCEEDINGS. CITY OF LONDON 100023243 2016.
Date: FEB 24	
Designed by: BB	
Checked by:	

Scale & Drawing Size: 1:100@A1	Revision: --	Drawing No: 100/16100454/FCWA/GA
--	------------------------	--



Remaining sections of signalised crossing being install as part of 101 Moorgate S278

Kerb line subject to change. Consult with engineer prior to install