

Key

P1 - New York stone paving slabs

P2 - York stone tactile paving

P3 - Granite stepping stones

K1 - Existing granite kerb retained to carriageway

K2 - Granite formed rain garden

K3 - Metal edging to form new layout of southern planting bed

F1 - Relocated Barge Master and Swan sculpture to be set on central planter base

F2 - Proposed timber slatted benches

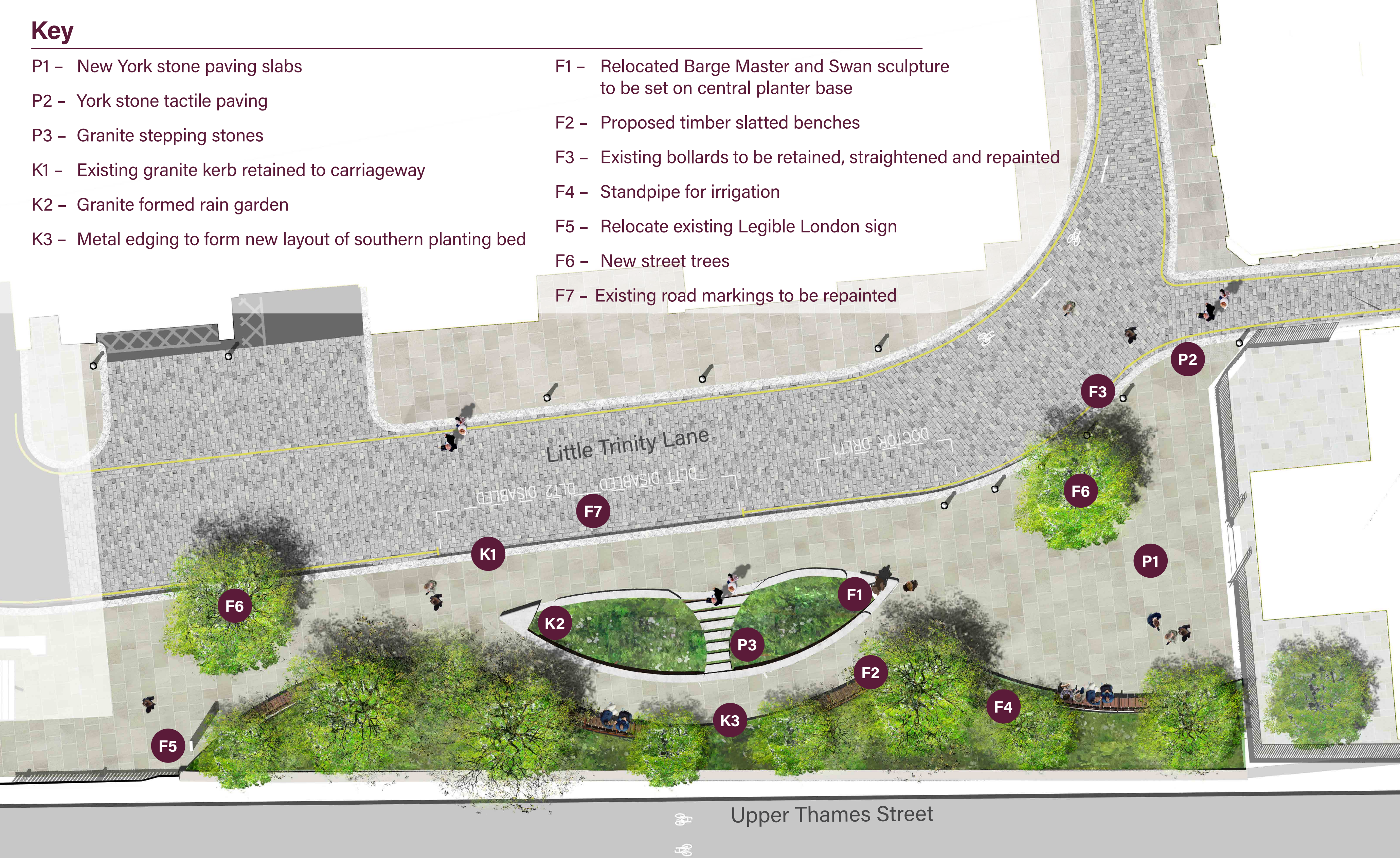
F3 - Existing bollards to be retained, straightened and repainted

F4 - Standpipe for irrigation

F5 - Relocate existing Legible London sign

F6 - New street trees

F7 - Existing road markings to be repainted



Upper Thames Street